

SUPPLEMENT TO THE AGENDA FOR

Health & Social Care Overview and Scrutiny Committee

Wednesday 1 October 2014

3.30 pm

Shire Hall, Hereford

- 8. HEREFORDSHIRE SAFEGUARDING CHILDREN BOARD (HSCB) ANNUAL REPORT AND BUSINESS PLAN PRESENTATION**



HSCB Annual Report 2013/14

Supplementary Data

Number of Children Subject to a CP Plan

| | at 31.3.13 | at 31.3.14 |
|---|------------|------------|
| No of children subject to a Child Protection Plan | 208 | 233 |
| No of children on a CP Plan who are also Looked After | 11 | 8 |
| No of children who were previously subject to a CP Plan | 39 | 57 |
| No of children whose CP Plan was longer than 6 months | 71 | 127 |

Category of Abuse

| | | | |
|---|-----|-----|--|
| Emotional Abuse | 89 | 115 | |
| Emotional Abuse, Neglect | 24 | 19 | |
| Emotional Abuse, Neglect, Physical Abuse | 0 | 4 | |
| Emotional Abuse, Neglect, Sexual Abuse | 3 | 0 | |
| Emotional Abuse, Physical Abuse | 30 | 17 | |
| Emotional Abuse, Physical Abuse, Sexual Abuse | 0 | 1 | |
| Emotional Abuse, Sexual Abuse | 1 | 3 | |
| Neglect | 47 | 59 | |
| Neglect, Physical Abuse | 0 | 3 | |
| Neglect, Sexual Abuse | 3 | 4 | |
| Physical Abuse | 1 | 6 | |
| Sexual Abuse | 10 | 2 | |
| Totals | 208 | 233 | |

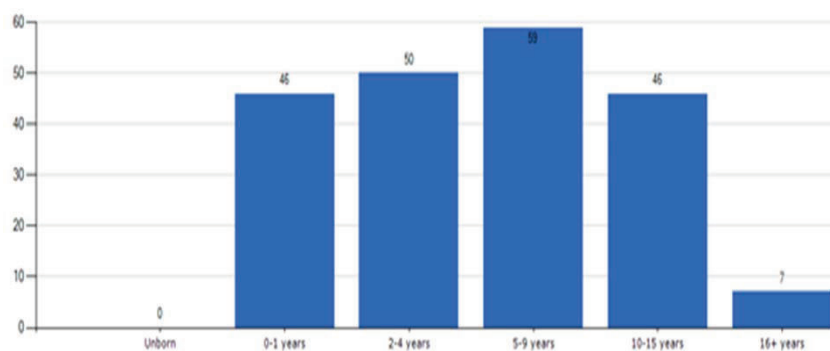
Length of time on a CP Plan

| | at 31.3.13 | at 31.3.14 | % ± |
|--------------------------------------|------------|------------|-----|
| under 3 months | 73 | 58 | |
| over 3 months but less than 6 months | 64 | 48 | |
| over 6 months but less than 1 year | 44 | 82 | |
| over 1 year but less than 2 years | 22 | 44 | |
| over 2 years but less than 3 years | 3 | 1 | |
| over 3 years | 2 | 0 | |
| Totals | 208 | 233 | |

Ethnicity

| | at 31.3.13 | at 31.3.14 | % ± |
|---------------------------|------------|------------|-----|
| Dual Heritage | 8 | 1 | |
| Asian or Asian British | 5 | 0 | |
| Not recorded on Framework | 2 | 9 | |
| Unknown | 2 | 1 | |
| White | 191 | 222 | |
| Totals | 208 | 233 | |

CP Plan by Age March 2013



CP Plan by Age March 2014

